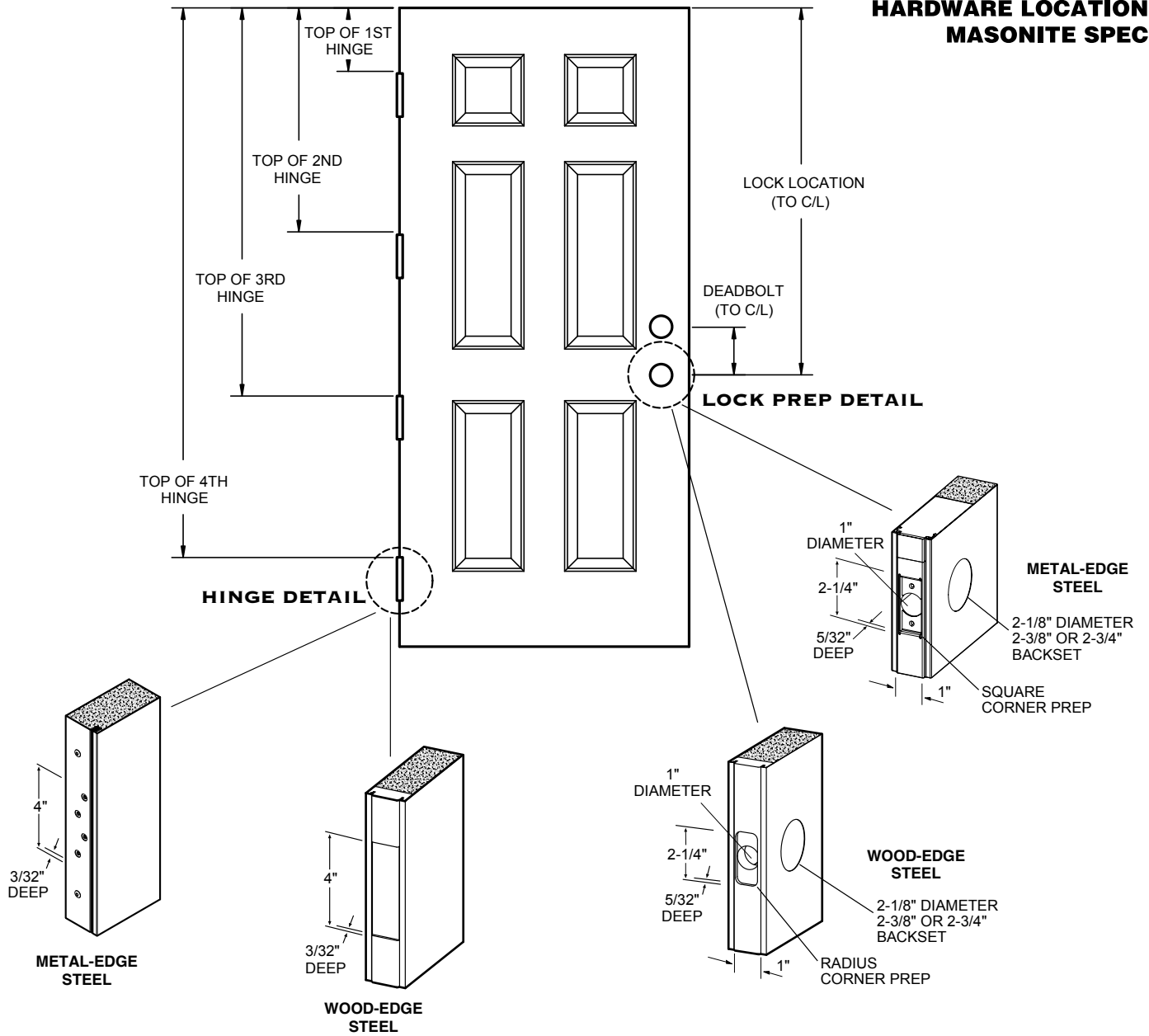


HARDWARE LOCATION MASONITE SPEC

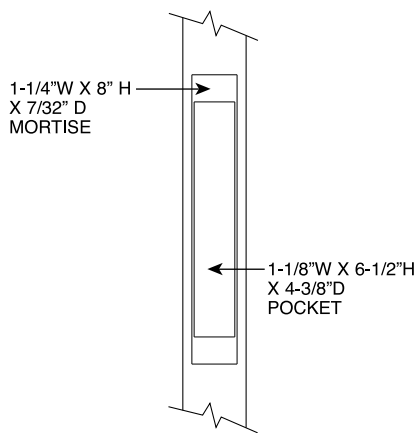
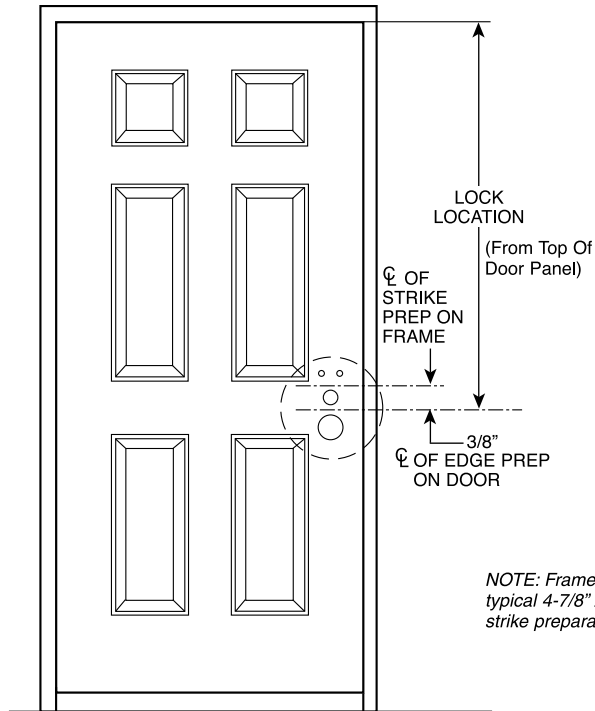


HINGE LOCATION					
Nominal Panel Height	Top Hinge Location	2nd Hinge Location	3rd Hinge Location	4th Hinge Location	Bottom
6'8"	6-1/2"	37-1/2"	68-1/2"	N/A	10-1/2"
8'0"	6-1/2"	32-1/2"	58-1/2"	84-1/2"	10-1/2"

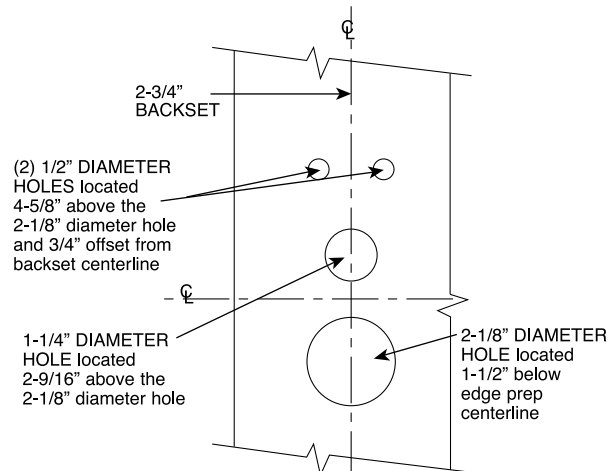
LOCK LOCATION		
Nominal Panel Height	Lock Location	Deadbolt C/L
6'8"	45-7/8"	5-1/2"
8'0"	61-7/8"	5-1/2" or 10-1/2"

Our continuing program of product improvement makes specifications, design and product detail subject to change without notice.

HARDWARE LOCATION ONITY (formerly TESA) BRAND MORTISE LOCK



EDGE DETAIL

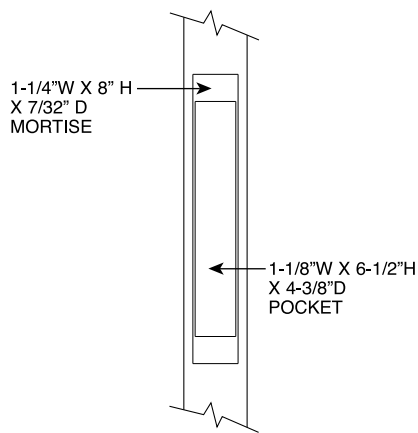
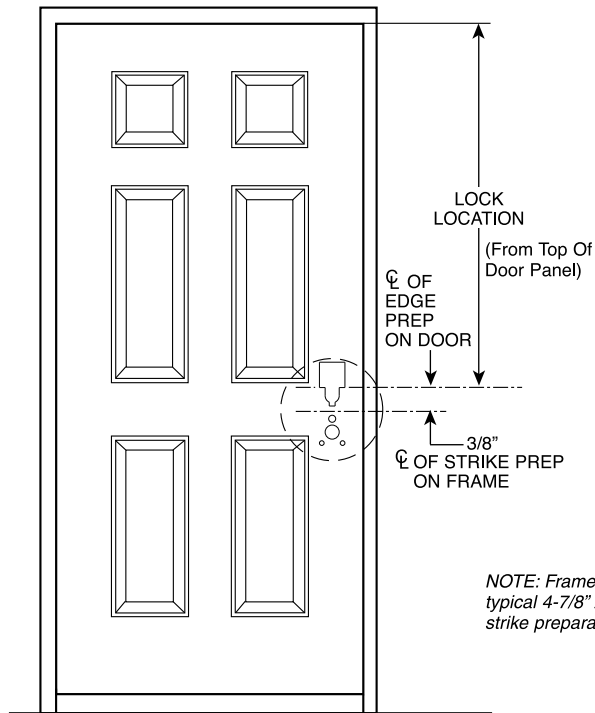


FACE DETAIL

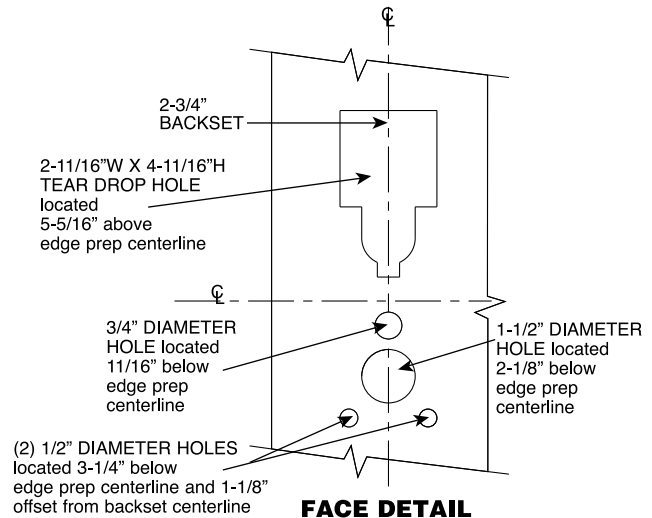
LOCK LOCATION	
Nominal Panel Height	Centerline of Edge Prep on Door
6'8"	44-1/16"
8'0"	60-1/16"

Our continuing program of product improvement makes specifications, design and product detail subject to change without notice.

HARDWARE LOCATION VINGCARD BRAND MORTISE LOCK



EDGE DETAIL



FACE DETAIL

LOCK LOCATION	
Nominal Panel Height	Centerline of Edge Prep on Door
6'8"	44-1/16"
8'0"	60-1/16"